



FARM & WILDERNESS

FAMILY HANDBOOK

for

Barn Day Camp 2023

Updated April 2023



Family Handbook

CONTENTS

This Is.....Page 2
Welcome LetterPage 3
Important Dates & Deadlines.....Page 4
Camp & Offices Contact Info.....Pages 5-6
Health & Wellness at Camp.....Pages 7-10
 Health Forms
 Camp Health Centers
 Immunizations
 Off-campus medical care
 Sickness or Injury at Camp
Travel, Arrival, & Pick-Up.....Page 11-14
Camp Locations & Directions.....Page 14
Community & Culture.....Pages 15-19
Tuition & Fees.....Page 20
 Rates
 Deadlines
 Policies
 Campership (Financial Aid)
 Additional Fees
 Partnership Families
After Camp.....Page 21
 Feedback & Testimonials
 Shipping Items Home
 Photos of Camp
 Outstanding Invoices
 Staying in Touch



Throughout this handbook if you see text in **BLUE, it's a link!** Please use these links as additional tools to prepare you for this summer.

Camps & Acronyms

Farm & Wilderness = F&W
Barn Day Camp - BDC
Firefly Song - FS
Flying Cloud - FC
Red Spruce Grove = RSG
Saltash Mountain = SAM
Tamarack Farm = TF
Timberlake = TL

Welcome to Summer



Whether it is your first year with us or the latest of many, it is bound to be an unforgettable summer here in the Green Mountains.

Consider this handbook, along with the rest of the info on the family resource page, to be your guide to this summer's adventure. In the following pages we'll discuss how the camps operate, how your child will travel, the necessary paperwork we need before your child arrives at camp, how to stay connected with us before, during, and after this summer, and more. Even if you are a returning family, please look over the handbook and packing list, because some aspects of the summer have changed in exciting and important ways.

This summer, our job is to create a safe and nurturing environment for your child as they push themselves to experience new wonders, take on new challenges, and discover brilliant things about themselves, their community, and the world around them. It is an unbelievably fun job, and it is one we do not take lightly! We ask you, in turn, to support our programs by reading this handbook, completing your forms thoroughly and on time, and following our guidelines for summer communications.

We are looking forward to a summer full of togetherness, freedom, and a summer at camp much closer to how we remember it pre-pandemic. That said, COVID-19 is still not 100% in our rearview mirrors, and there may be continued policies in place to ensure your camper is as safe and healthy as possible this summer. You will be able to read more about these policies in the handbook, while keeping in mind that they are subject to change as we stay up to date with best practices. The past few years have brought our community so much closeness and strength, and this summer will be an opportunity to celebrate it all.

We will be in touch with several additional communications and opportunities to connect before summer begins to ensure you have the most accurate information about coming to camp this year. As always, our Admissions Team and Camp Directors are available to answer any questions you have. Please use pages 5-6 as your guide to be in touch with us.

IMPORTANT DATES & DEADLINES

Mark Your Calendars with these dates for ALL Farm & Wilderness overnight & day camp programs

June

June 1

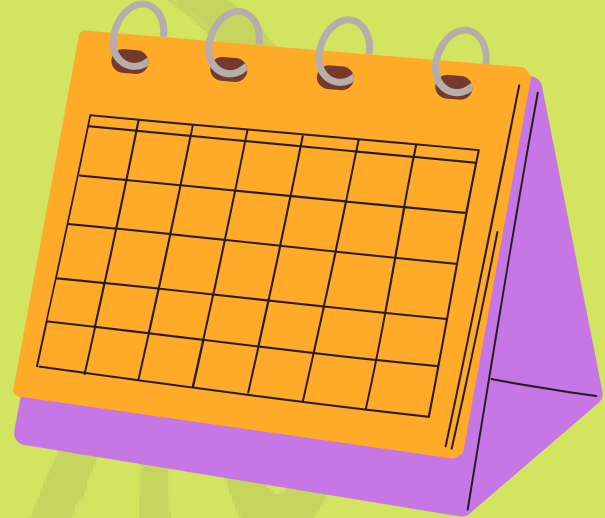
- Tuition due
- Physical exam form due

June 26

First Day of Barn Day Camp Session 1

June 30

- Barn Day Camp Session 1 Ends
- First Day of Overnight Camp Full Summer/Session 1/Spark 1



July

July 3

Barn Day Camp Session 2 Begins

July 10

Spark Session 1 Ends

July 14

Barn Day Camp Session 2 Ends

July 17

Barn Day Camp Session 3 Begins

July 20

Overnight Session 1 Ends

July 23

Overnight Session 2/Spark 2 Begins

July 28

Barn Day Camp Session 3 Ends

July 31

Barn Day Camp Session 4 Begins

August

August 2

Spark Session 2 Ends

August 11

Barn Day Camp Session 2 Ends

August 12

Fair!

August 13

Overnight Full Summer/Session 2 Ends



CONTACT US

Who to Contact & When

All calls and emails should be directed to the Main Office year round during our office hours. Staff working in that office are dedicated to answering questions & assisting all camp families needs as well as directing all phone or email communications to ALL camps. We can answer your questions or connect you with right person or camp office who can.

During the summer months only (mid-June through mid-August), you may call or email camp offices and health centers directly during your child's camp session. The main focus of our Camp Directors and camp staff is the care and safety of all campers. Camp staff strive to return calls and emails within 48 hours, unless it is an emergency situation.

EMERGENCY COMMUNICATIONS ONLY

If you have a family emergency during your child's camp session, please call the Main Office during office hours FIRST. If it's outside of our Main Office hours, call your camp office next and ask to speak to a Camp Director. If you MUST get a hold of someone within 24 hours and cannot reach anyone by phone, you may use our pager system.

To Page a Camp Director:

Call 1-888-622-3276

You will be asked who you would like to page Leave the **name of the camp director** and a **brief message** and **phone number** where you can be reached.

5



Main Office Hours & Contacts

Summer Office Hours

Monday - Friday 8:30AM-4:30PM

Closed on Saturdays & Sundays

Year-Round

General

(802) 422 - 3761

info@farmandwilderness.org

Admissions

Sam Green | Enrollment Director

Jenny Rist | Admissions Coordinator

Admissions@farmandwilderness.org

Finance

William Dido | Bookkeeper

William@farmandwilderness.org

All Camp Health & Wellness

Terri Hunt | Health & Wellness Coordinator

headnurse@farmandwilderness.org

When calling 422-3761, follow the voice prompts to tell the auto attendant which person or department you'd like to connect with.





FARM & WILDERNESS CAMP OFFICE CONTACT INFORMATION

Barn Day Camp (BDC)

Director | Emily Mathon
Director Email | Emily@farmandwilderness.org
Assistant Director Email |
 BDCassistantdirector@farmandwilderness.org
Camp Office Phone | 802-422-3565

Firefly Song (FS)

Director | Clarissa Thompson
Director Email | Clarissa@farmandwilderness.org
Assistant Director Email |
 FSassistantdirector@farmandwilderness.org
First Lodge Email |
 FSfirstlodge@farmandwilderness.org
Big Lodge Email |
 FSbiglodge@farmandwilderness.org
Senior Lodge Email |
 FSseniorlodge@farmandwilderness.org
Camp Office Phone | 802-487-0399
Health Center Phone | 802-489-7888

Flying Cloud (FC)

Director | Elliott Siegreest Jones
Director Email | Elliott@farmandwilderness.org
Assistant Director Email |
 FCassistantdirector@farmandwilderness.org
Camp Office Phone | 802-422-3761 (Ask for Elliott,
 leave a message only)
Health Staff Contact*| 802-490-5711
 *Same as Saltash Mountain

**Flying Cloud and Red Spruce Grove do not have physical health center locations, but do have medical staff assigned to them who make regular trips to check in on these camp programs and can be reached by phone at the Saltash Mountain Health Center.*

Red Spruce Grove (RSG)

Director | Mal Murtha
Program Director Email |
 RedSpruceGrove@farmandwilderness.org
Camp Office Phone | 802-422-3761 (Ask for Mal, leave
 a message only)
Health Staff Contact*| 802-490-5711
 *Same as Saltash Mountain

Saltash Mountain (SAM)

Director | Adair Arbor
Director Email | Adair@farmandwilderness.org
Assistant Director Email |
 SAMassistantdirector@farmandwilderness.org
Camp Office Phone | 802-259-2415 or 802-490-5151
Health Center Phone | 802-490-5711

Tamarack Farm (TF)

Director | Kate Kyros
Director Email | Kate@farmandwilderness.org
Assistant Director Email |
 TFassistantdirector@farmandwilderness.org
Camp Office Phone | 802-490-5703
Health Center Phone | 802-487-0435

Timberlake (TL)

Director | Jarod Wunneburger - aka "W"
Director Email | Jarod@farmandwilderness.org
Assistant Director Email |
 TLassistantdirector@farmandwilderness.org
First Lodge Email |
 TLfirstlodge@farmandwilderness.org
Big Lodge Email |
 TLbiglodge@farmandwilderness.org
Senior Lodge Email |
 TLseniorlodge@farmandwilderness.org
Camp Office Phone | 802-490-1563
Health Center Phone | 802-422-4481

These offices and health centers are located physically at each camp and they will only be open between June 26th to August 13th.





HEALTH & WELLNESS AT CAMP

COVID-19 Safety, Guidelines, Updates

We are diligent about creating a healthy camp environment every summer. This year, in light of the ongoing COVID-19 pandemic, we may still have additional health & safety procedures in place. Not only are we a summer camp responsible for providing care and programming for hundreds of children over the summer, we are also the home and employer of hundreds of staff members. The health and well-being of our community is incredibly important to us and we take the responsibility of creating a safe environment very seriously. We learned a great deal from our experience last summer and we are working hard to make sure that we implement measures based on that experience and that we understand and follow the most up-to-date guidance for summer camps and implement changes and communicating this to our families and staff as we approach the summer.

Changes can still happen as we approach the summer. We ask that everyone participate in being aware of the Farm & Wilderness specific guidance, which we will communicate to all registered families as well as post on [our website's Health & Safety page](#). This will support a safe and healthy environment for us all.

Staff & Training

Farm & Wilderness takes many steps to ensure that all campers have a happy and healthy summer. Each summer, all cabin staff and trip leaders are trained in First Aid and CPR. We also have a number of staff who are certified as Wilderness First Responders and Emergency Medical Technicians.

Camp Health Centers

The Barn Day Camp is visited each day by one of the overnight camp Health Center Nurses and is on call as needed for emergent assessments. If a higher level of medical care is needed, local clinics and a regional hospital are within twenty miles of camp. If your Barn Day Camper needs an offsite medical consult, we will call you and ask you to pick your camper up and transport them to the clinic. We will use the phone number and /or email you have provided in CampDocs. Please let us know if you and your emergency contact are going to be unavailable or at a different location from the one listed for any period of time.

Medications & Prescriptions

It is Farm & Wilderness policy to collect all prescriptions/vitamins/medications of any kind from campers on the first day of camp (or the morning campers will leave for their overnight) and for the nurse/camp staff to dispense them as prescribed. **All medications must be in their original packaging/bottle with the prescribing directions printed clearly on the label.**

Camper Health Forms and Information

The Camper Health Form completed as part of registration as well as the Physical Exam Form are both required for a child to attend camp. It is important we have the most accurate health information for your child while they are in our care. More information on the Physical Exam Form can be found on page 8.

If there are any changes in your child's health before camp begins, please let us know before you arrive to drop them off.





HEALTH & WELLNESS AT CAMP

Illness: We ask that parents assist us by keeping sick children at home if they have experienced any of the following symptoms within the prior 24 hours:

- A fever over 100 degrees (37.8C) orally
- Signs of a newly developing cold or severe coughing
- Shortness of breath
- Chills, muscle pain or body aches
- Loss of taste or smell
- Diarrhea, vomiting, or upset stomach
- Unusual loss of appetite, fatigue, irritability, or headache
- Discharge or drainage from eyes, nose, or open sores
- Have been on close contact with someone with confirmed COVID-19 in the last 14 days
- Have consulted with their healthcare provider about current symptoms, COVID-19 testing was recommended and they are awaiting results.
- Have been tested for COVID-19 and return a positive diagnostic result.
- Please call the Barn Day Camp office to let us know if your child will not be coming to camp because of illness.



Emergencies

If your child is seriously injured or becomes seriously ill at camp, our staff will call 911. Immediately thereafter, you (or your emergency contact) will be notified. For less serious injuries/illnesses, our Wilderness First Aid certified staff will treat the injury/illness up to the level of their training. If a doctor's visit is the next step, you will be asked to pick up your child and transport them to the doctor or clinic of your choice. If your camper develops any signs and symptoms of communicable illness while at camp, we will notify you to come and pick up your camper



HEALTH FORMS & INFORMATION

CampDoc Health Profile

What Are They & Who Completes Them?

The camper's parents/ legal guardians complete this form as part of registration. This is essential basic medical history, allergy, mental health, food preferences, and insurance information. These forms must be completed upon registration every year. If we do not have your camper's registration forms within 10 days of registering your camper, you will begin to receive automated reminder emails and you may get a call from us asking for you to complete the forms. **Your registration may be cancelled if it remains incomplete** after notifications.

The reason we ask for this information so early in the process is that every camper's profile undergoes a pre-camp screening by our staff. Camper families may hear from our health staff before camp begins to follow up on the information provided. Then, once summer starts, nurses have this information to provide your child with the care they need should they become sick or injured at camp. It also ensures we have information about food allergies for our kitchens.

How to Access & Update Them

You MUST complete the Health History form through your online account which holds your child's registration. If any changes happen between the time you first completed the form and the start of camp, please request an update to this form. If you need assistance in accessing your account, please contact our admissions department.

The Camper Health Profile, completed during registration, as well as the physician Physical Exam Form are both required for a child to attend camp. It is important we have the most accurate health information for your child while they are in our care. Please let Admissions and your Camp Director know if there are any changes to your child's health before you arrive to drop them off.

Physical Exam Form

What Are They & Who Completes Them?

These are essential forms containing information about your child's current health and immunization record completed by your child's primary care physician. **Campers must have had a physical exam within one year of their arrival at camp.**

Most doctor's offices have their own format for these forms and we accept all formats as long as they contain basic health information, the immunizations record, and a physician's signature & contact information. We also provide our own form for you to bring to the doctor's office if you'd like. You can download a copy of this form via the physical exam form in your registration account or request a copy be mailed or emailed to you from Admissions.

You must submit a copy of this form before your arrival to camp.

Please do not email, mail, or fax your child's physical exam form. The form must be uploaded to their CampDoc account. If you have trouble uploading your form online, please contact us by email at admissions@farmandwilderness.org or call 802-422-3761 and someone will assist you.

Immunizations

In the state of Vermont, summer camps are considered "Child Care" facilities. Therefore, we require all campers are up to date with the Vermont State health guidelines regarding immunizations for Child Care centers. For more information about child immunization requirements in the state of Vermont, visit the [Vermont Immunization Information for School - age Children website](#).

Immunization Exemptions & Waivers

Please reach out to admissions directly if you require more information about the processes for medical or religious exemptions or amended/alternative/catch-up immunization schedules, all of which are reviewed on a case-by-case basis.

Immunization Records

Please enter your camper's immunization records (including dates each dose was administered) in the immunizations section of your child's CampDoc health profile. Immunization records, once dates have been input into their CampDoc Health Profile, will remain in their profile from year to year to review and confirm, when you may also enter any boosters they have since received.

COVID-19 Vaccination

Farm & Wilderness strongly recommends, but does not require the COVID-19 vaccination and booster doses for participation in Summer 2023.

Off-Site Medical Care

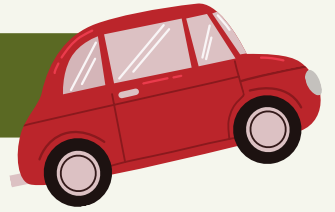
Each camp has a health center, or infirmary, with a licensed nurse on site as well as staff trained in physical and mental health support. Most care for injuries or sickness we can provide on site. However, if needed, we will transport your child to a local clinic for care we cannot provide onsite. We will contact you by phone and/or email if we see the need to do this.

Your insurance will be billed for any off-site medical care provided. Farm & Wilderness will provide invoices for any unpaid medical expenses or prescriptions accrued which you insurance does not cover.

We ask families to upload a legible picture/scan of their camper's insurance card to the insurance section of CampDoc, so we have this information readily available if needed.



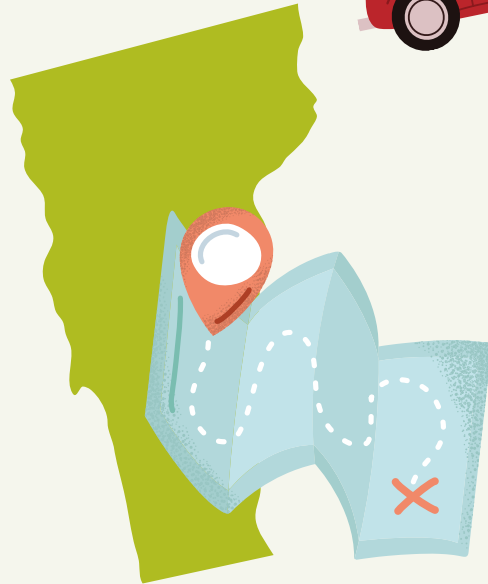
TRAVEL, ARRIVAL, & PICK-UP



Traveling To & Within Vermont

There are many wonderful options and local accommodations if you are traveling to stay in the area during the time your child is enrolled at the Barn Day Camp.

Farm & Wilderness is located in Plymouth, Vermont near ski resorts and towns with a selection of hotels and rental houses available. We recommend that you visit the following sites to find the best accommodation for your visit.



[Suggested Area Lodging & Accommodations](#)



BDC Schedule

The BDC is in session Monday through Friday.
The schedule is as follows:

Session 1: June 26 - June 30 (one week)

Session 2: July 3 - July 14 (two weeks)

Session 3: July 17 - July 28 (two weeks)

Session 4: July 31 - August 11 (two weeks)

TRAVEL, ARRIVAL, & PICK-UP

Arrival: Drop-Off & Pick-Up

Our top priority is to keep our camp families safe and welcomed as they arrive to camp. We are very excited to greet you and your campers when you arrive this summer!

Arrival/Drop-off: Campers arrive at the Barn between 8:45 AM and 8:55 AM. Camp begins at 9:00 AM with the ringing of the bell. After you turn in on Farm & Wilderness Rd at the north end of Woodward Reservoir, drive across the dam and look for signs or a person directing you to where you can park your car.

Departure/Pick-up: Campers finish their day at 4:15 PM. We ask that you ALWAYS check in with a BDC staff person before picking up your child each day. Please pay close attention to the schedule of the last Friday of the session as it is different than all other camp days.

Pickup Authorization: If you plan on someone else picking up your child, either at camp or at the drop-off sites, the camp needs to know this in writing. For obvious safety reasons, no one can pick up your child without this written authorization from you.

Orientation and Information Sessions: There will be a family orientation and informational session the first Monday of each session for camper parents/guardians. Each orientation session offers parents/guardians an opportunity to ask questions and learn more about their camper's Barn Day Camp experience. This will take place after drop-off that morning. Learn about all F&W camp programs, meet F&W staff, ask questions of the BDC director.



TRAVEL, ARRIVAL, & PICK-UP

Attendance and Closing Day

Attendance: If a camper does not show up on the first day of a session, the staff will call you to verify enrollment in the session. We ask parents to notify the staff in advance whenever a child is going to be absent.

Fourth of July: Tuesday July 4 is during Session 2 of the Barn Day Camp, and we will have a full regular day of camp, so please plan for your camper to be there, or at the very least, let our staff know ahead of time if they will not be attending camp that day!

Last Day & Closing Ceremony of Sessions: On the final Friday of each session, camp will end earlier and families will receive their scheduled pick up time, and we invite families to join us for closing ceremonies and silent meeting (from 10-11am) on these Fridays and will let families know more detail via email closer to these days. Families are responsible for their child's transportation home on these last days. **There is no bus service on these Fridays.**

Prior permission is needed if we are to release a child to someone other than their parent or legal guardian. If you have arranged for someone else to pick up your child, you will need to give admissions and the camp director/camp senior staff advance notice of this arrangement along with the person's name and contact information before the camper will be allowed to leave with this person.





Driving Directions

From the Woodstock area and points East:

Take US Rt.4. West to Rt. 100 South in West Bridgewater. Go south on Rt. 100 for 2 miles to the main entrance of F&W and turn left on Farm & Wilderness Rd. Proceed on the camp road over the dam where there will be a person or sign indicating where to park.

From Rutland area and points West: Go East on Route 4 through Rutland and Killington, then take Rt. 100 south in West Bridgewater. Go 2 miles south to the main entrance of F&W and turn left at the sign on Farm & Wilderness Rd.

Proceed on the camp road over the dam where there will be a person or a sign indicating where to park.

From Ludlow area and points South: Take 100 north. Go north approximately 12 miles to Woodward Reservoir on your right. Turn right at the camp sign on Farm & Wilderness Rd. Proceed on the camp road over the dam where there will be a person or a sign indicating where to park.

Woodstock Shuttle

For summer 2023 we will offer shuttle transportation for campers to and from camp from the Woodstock (VT) elementary school. This service is an additional \$100 per week, per camper, (\$200 for the two week sessions (2, 3, 4). To sign up for transportation, please add this option on during registration or please email admissions@farmandwilderness.org to add it on later!

The shuttle departs Woodstock at 8:15am and returns at 4:55pm. If you are going to be late to drop off or pick up or not use/miss the shuttle, please call the Barn Day Camp office. We cannot guarantee holding the shuttle past its departure time for folks who are running late. If the bus is more than 10-15 minutes late, please call the Barn Day Camp office. If there are any last minute changes to the transportation schedule, you will be notified via phone.

All campers will be expected to arrive and depart on the shuttle for every day of the session, unless prior arrangements are made with the Barn Day Camp Director or Assistant Director. This includes the first day of a session. If you plan to drive your camper in yourself on the first day, please contact the Barn Day Camp ahead of time to let us know, otherwise we will assume your camper plans to ride the shuttle.

There is no shuttle service on the second Thursday of a 2 week session, as that is when campers depart for their overnight. There is also no shuttle to camp on the second Friday morning for campers who do not spend the night, and there is no shuttle back to Woodstock on closing Fridays of a session.



Mission & Values



Our mission:

Joyful Play. Purposeful Work. Rugged Outdoor Living.

Our camps and conservation efforts teach timeless skills and kindle the spirit within.

Our Values:

We honor our Quaker roots and are guided by Quaker values and practices:

Simplicity

We believe in the radical notion of unplugged resourcefulness and restful stillness

We minimize that which separates us from one another and the natural world

Living simply prepares each of us to find ourselves

Peace

We cultivate peace: first within ourselves, then the world

We are called to speak our truths compassionately

It's not easy, and it's worth the struggle

Integrity

We strive to embody our beliefs in our actions

We are mindful of our intentions and are each responsible for our impact

Keeping our word and keeping it real

Community

We gather in joyous service to each other and the land

We honor traditions that guide us and they must not bind us

Inclusivity facilitates belonging

Equity

We take our place alongside others working towards a more just world

We confront societal forces that divide, degrade, and dehumanize

The work is never done; we lift as we rise

Sustainability

We are not separate from the land, the water, and the life all around us

We work with humility for the well-being of our planet, now and for future generations

Living in nature sparks curiosity and wonder, and that's what we're here for.



Many Quaker & Quaker-based organizations have a similar acronym of shared principles, known as the "SPICES", and just like we have done here, take the opportunity to further define what exactly each of the named values means for them.

COMMUNITY & CULTURE

Unplugged

We aim to live a simple life here at Farm & Wilderness. Campers reside in simple wooden or canvas structures without electricity and use composting outhouses. Shower houses are located nearby. We don't allow personal electronic devices, televisions, screens of any kind, or recorded music in cabin areas or program areas at any of our camps. Some of our camps such as Flying Cloud and Red Spruce Grove, don't permit electricity of any kind, such as battery operated lights.

While our camp program areas and spaces where camper live and play are free of screens, our camp offices, medical centers, and Main Office are equipped with the tools to run camp such as electricity, phones, & internet. We also permit our photographers to capture camp memories with the appropriate cameras and equipment.

The "Fifth Freedom"

America's "four freedoms" were first articulated by President Franklin D. Roosevelt in a State of the Union address as freedom of speech and expression, freedom of religion, freedom from want, and freedom from fear. Here at Farm & Wilderness, we have traditionally recognized an additional "fifth freedom," which, simply put, is the freedom to be oneself.

We encourage campers to find their truest and most genuine potential through simple living and activities filled with physical and mental challenges. We invoke "fifth freedom" to help us focus on healthy personal choices and on expressing our individuality. Campers particularly love the freedom to dress as they wish, without fear of being reprimanded by their peers.



Building A Welcoming Community

Your child will live closely with children and staff of different backgrounds, cultures, races, and religions. We teach respect for differences and expect campers to interact at all times in ways that are respectful and inclusive. Prejudice, discrimination, and oppression on the basis of class, race, gender, and sexual orientation are discussed in a variety of forums during a camper's time at Farm & Wilderness.

We strongly believe that building a welcoming and inclusive community requires campers and staff to engage in shared discussion, reflection, and experience around equity, diversity, inclusion, & belonging while living, playing, and working together in the wilderness and on the farm. We use our mission and values to support this community growth throughout the summer.

Although the daily schedule at the camps remains similar from year to year, the character of each summer is created by individual campers. Community builds steadily over the course of the session as campers work together, cope with interpersonal conflicts, play together, and sit in silence together each day.



Special Events

We are optimistic about the possibility of larger in-person gatherings at Farm & Wilderness this summer, most of all our end of year Fair. While there are likely to be some changes from years past, the overall spirit of gathering together to celebrate a wonderful summer will remain at the heart of the day.

We look forward to resuming scheduled tours of our camps for interested families and will update this portion of our website once we have these planned!



Life on the Farm

For the majority of campers, living at camp also means living on a working farm. Animals giving birth and animals dying are part of the natural cycle of farm life and these events also occur during the summer. It is important to us that campers understand where their food comes from and the full cycle of how the food we eat at camp starts and ends its journey to our plates. Campers are encouraged to take part in working with animals to the degree that they feel comfortable.

Adventure Day

This event occurs during the first Thursday of every session. Each group goes on a day hike/adventure appropriate for their age level. These daylong excursions will highlight some of the beautiful and interesting parts of Farm & Wilderness campus as well as to local places of interest. We will be hiking and camping close to camp and emphasizing adventure in being out and working together rather than where or how far we go. Some of the locations may require a short ride in a vehicle. Essential Items to Pack: Your child will need a daypack to carry their lunch, bathing suit, rain gear, warm clothing layer, and water bottle. Each child is expected to carry their own pack. A plastic bag inside helps to keep things dry if it rains.

All Adventure Day trips leave at 9:20AM and return by 4:00 PM.



Wilderness Trips (Session 2, 3, & 4 only)

An important part of your child’s experience at camp is the overnight camping trip. This will happen on the second Thursday of each session. Hawks/Ravens groups have a different Overnight Trip (See Hawks/Ravens Overnight Trips details). There will be no overnight trips during Session 1. Groups hike, cook dinner together, and sleepout overnight. Participation is not required, unless the camper is registered for the Hawks/Ravens program. The camp-out experience will be age-tailored, with the youngest campers staying closest to the Barn Day Camp.

All groups will depart by noon on the second Thursday of sessions 2, 3, & 4:

Session 2: July 13th

Session 3: July 27th

Session 4: August 10th



All Groups will return to camp on Friday morning between 9:00AM –9:30AM before the closing ceremony of camp.

Optional Pick-Up

While we encourage all campers to attend the overnight trip, for those campers who do not wish to sleep overnight, we urge them to stay at least through dinner. If they are not camping out, they should be picked up between 7:00PM and 8:00 PM at a prearranged location, most likely the Barn, but if their group is travelling farther, we may arrange for you to meet elsewhere. Pick-up must be coordinated with counselors and the Barn Day Camp Director/Assistant Director.

Hawks/Ravens Overnight Trips

Campers in the Hawks and Ravens program, an option at registration for 9 & 10-year-olds, are required to participate in a mandatory two night overnight trip. Hawks/Ravens overnight begin on the second Wednesday of the session. There is no special registration for the Hawks/Ravens group during Session 1.

All Hawks/Ravens groups will depart by noon on the second Wednesday of the session.

Session 2: July 12th

Session 3: July 26th

Session 4: August 9th



All Hawks/Raven Groups will return to camp on Friday morning between 9:00AM –9:30AM before the closing ceremony of camp.

All Overnight Trips

By enrolling your child at the Barn and sending them with overnight gear, we assume permission has been given for the overnight unless you tell us otherwise, as we will not be asking for a separate signed permission form. All overnight trip destinations are subject to change due to a variety of factors, such as weather and van availability. Families and children should be prepared for this possibility. Families will be notified if campers will be traveling in vans.

What to Pack

Use the Barn Day Camp [Packing List on our website](#) as your guide. The goal of the overnight experience is to foster self-sufficiency and independence. Thus, we expect all campers to carry their own clothes, water bottles, and mess kits.



Firm Rules

Swimming Policy

All campers are required to take swim tests during their first few days at camp and learn about water safety in and around our lakes. Personal flotation devices (PFDs) and other swim aids are always available. Barn Day Camp provides swim lessons throughout the summer, and campers are grouped according to their swimming skills. Swimmers at the waterfronts are supervised by lifeguards and swim instructors trained and certified under the auspices of a nationally recognized water safety provider. All campers and staff must follow camp waterfront rules throughout the summer.

COVID –19 protocols

For the safety and health of our camp communities, campers will be asked to follow all COVID-19 related safety procedures throughout the summer. Our wonderful staff will offer continued instruction and communication so that campers understand and can follow our procedures.

Grounds for Removal

At Farm & Wilderness, alcohol, tobacco, illegal drugs, and violence have no place. We want our policy to be very clear: Campers who use or have in their possession any alcohol, tobacco, or illegal drugs will be asked to leave camp immediately with no tuition refund.

Participation in physical violence, bullying, or leaving Farm & Wilderness property unaccompanied by a staff member is also grounds for immediate removal with no tuition refund.



TUITION DEADLINES & POLICIES

2023 Tuition Rates

Session 1| June 27 - July 1 |\$620
Session 2| July 4 - July 15 | \$1,240
Session 3| July 18 - July 29 | \$1,240
Session 4| Aug 1 - Aug 11 | \$1,240

All camp tuition is DUE on June 1st in 2023.

Deposits & Tuition Payments

- Before June 1, a \$100 non-refundable deposit is required upon registration.
- After June 1, full tuition is required upon registration.
- Deposits are non-refundable, unless you are a campership applicant.
- Unpaid balances for any and all family members must be reconciled in order for a camper to be registered.
- It is not possible to make any tuition reduction for arriving late or leaving early.
- Payment is in U.S. currency, payable by check, e-check, credit card, or wire transfer.

Cancellations & Refunds:

- Registration cancellations made before March 1st are eligible for a tuition refund less the \$100 non-refundable deposit.
- Families are responsible for the full amount of tuition if a cancellation is made after March 1st, except in cases of severe illness or family emergency.
- Campership families are notified within one month of their application due date and then have two weeks from that award notification to accept the award or withdraw their registration and receive a refund of their deposit.
- There will be no refund if a camper is asked to leave during the session for an infraction of a camp rule, for disruptive behavior, or if a camper is voluntarily withdrawn.

Financial Aid, Fees, Partnerships

The ability to apply for camperships is open for all of our camps. To learn more and how to apply, please visit our [Financial Aid for Campers page](#) for more information, application deadlines, or contact Admissions directly with any questions.

Additional Expenses & Fees

Additional expenses and fees, if incurred, will be reflected on invoice, along with tuition. They include the following:

Shipping Charges

If there are any lost & found items that are shipped back to you after camp is over the UPS, USPS, or Fed-Ex fees will be added to your bill.

Medical Expenses

Medical bills incurred over the summer will be sent from off-site facilities to your insurance provider. If necessary, F&W will pay for prescriptions up front, and then bill families.

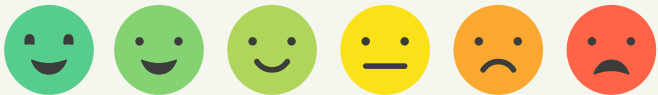
Partnership Families

We partner with several other organizations to bring campers to Vermont in the summer. If your camper is attending Farm & Wilderness through one of our partner organizations such as [1199 Anne Shore Sleep-Away Camp Program](#), [Saint Regis Akwesasne Mohawk Tribe](#), [Vermont Migrant Education Program](#), the tuition amounts and policies are different than listed on this page. Please contact your organization's representative or our admissions department to understand what is required for your child to be registered for the summer. You will also receive direct communication from Farm & Wilderness about your child's registration before the summer.

AFTER CAMP

Surveys

Throughout the year, Farm & Wilderness emails surveys to all families. The information we collect from these is an important part of our assessment of the summer. Your assistance is very much appreciated.



Mail, Lost & Found, & Shipping Items Home

Any mail that arrives for your child after they have left camp will be forwarded to you or returned to sender.

Farm & Wilderness claims no financial responsibility for personal items lost, stolen, or damaged during your child's stay at camp. For this reason, we discourage camper families from sending any items to camp they wouldn't be willing to risk losing. We will ship any found valuable & clearly labeled items home if possible. We will bill you for the shipping costs. any lost and found not labeled or claimed within one-week of the last day of camp will be donated.

Staff & Camper Off Season Communication

We advise our staff not to engage with campers via social media or other means of communication without the expressed permission to do so from the campers' parents/guardians and the camp's director. Please contact your camp director if you'd like to stay in touch in this manner.

Keeping in Touch

[The Interim](#) is our newsletter for camper parents and friends of Farm & Wilderness. You'll automatically be on our email list for the electronic version of the Interim. If you would like to receive the paper version, please let us know and we will add you to our address list.

Medical Bills

Medical bills incurred over the summer will be sent from off-site facilities to your insurance provider. If necessary, Farm & Wilderness will pay for prescriptions up front, and then bill families.



Photos from Camp

Farm & Wilderness is an unplugged, technology-free environment for campers. When it comes to photos, we prioritize our camper's experience over taking pictures. We understand many families want to see photos of their children at camp, but because of the sizes and locations of our camps and the scope of our programming we are unable to photograph every camper.

With your child's enrollment, you are granting Farm & Wilderness permission to use images, pictures, slides, film, and video of your child taken by Farm & Wilderness for press, promotion, marketing, social media, and advertising of Farm & Wilderness as well as any of our affiliated organizations such as the [American Camp Association](#) and the [Ninevah Foundation](#).