



FARM & WILDERNESS

FAMILY HANDBOOK

for

Barn Day Camp 2022

Updated April 2022



Family Handbook

CONTENTS

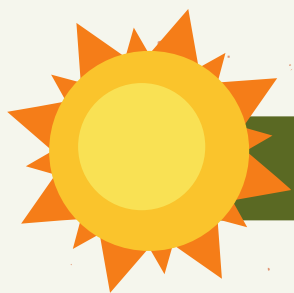
Welcome Letter	Page 3
Important Dates & Deadlines.....	Page 4
Contact Sheet.....	Pages 5-6
Health & Wellness at Camp.....	Pages 7-10
COVID-19 Safety and Precautions	
Daily Health Screening	
Health Forms	
Immunizations & Medical Care	
Travel, Arrival, & Pick-Up.....	Pages 11-14
Traveling to and Within Vermont	
Arrival: Drop off & Pick-Up	
Driving Directions & Shuttle	Page 14
Community & Culture.....	Page 15-19
Mission & Values	
Special Events	
Overnight Trip Info	
Tuition & Fees.....	Page 20
Rates & Due Dates	
Policies	
Campership (Financial Aid)	
Additional Fees	
Partnership Families	
After Camp.....	Page 21
Camper Letters	
Shipping Items Home	
Photos of Camp	
Outstanding Invoices	
Staying in Touch	



Throughout this handbook if you see text in **BLUE, it's a link!** Please use these links as additional, tools to prepare you for this summer.

Camps & Acronyms

Farm & Wilderness = F&W
Barn Day Camp - BDC
Flying Cloud - FC
IB = IB
Questers = Q
Red Spruce Grove = RSG
Saltash Mountain = SAM
Tamarack Farm = TF
Timberlake = TL



Summer 2022

WELCOME!

Dear Barn Day Camp Families,

Consider this handbook, along with the other info on our [family resource page](#), to be your guide to this summer's adventure! In the following pages we'll discuss how the BDC operates, how your child will travel, the necessary paperwork we need before your child arrives at camp, how to stay connected with us before, during, and after this summer, and more. Even if you are a returning family, please look over the handbook and packing list, because some aspects of the summer have changed in exciting and important ways.

This summer, our job is to create a safe and nurturing environment for your child as they push themselves to experience new wonders, take on new challenges, and discover brilliant things about themselves, their community, and the world around them. It is an unbelievably fun job, and it is one we do not take lightly! We ask you, in turn, to support our programs by reading this handbook, turning in your forms on time, and following our guidelines for summer communications.

We are looking forward to a summer full of togetherness, freedom, and a summer at camp much closer to how we remember it pre-pandemic. That said, COVID-19 is still not in our rearview mirrors, and there will be continued policy to ensure your camper is as safe and healthy as possible this summer. You will be able to read more about these policies in the handbook, while keeping in mind that they are subject to change as we stay up to date with best practices. The past few years have brought our community so much closeness and strength, and this summer will be an opportunity to celebrate it all.

We will be in touch with several additional communications and opportunities to connect before summer begins to ensure you have the most accurate information about coming to camp this year. As always, our Admissions Team and Camp Directors are always available to answer any questions you have. Please use pages 5-6 as your guide to get in touch with us.

All Our Best,

Farm & Wilderness Staff

• IMPORTANT DATES & DEADLINES •

Mark Your Calendars with these dates for ALL Farm & Wilderness overnight and day camp programs

June

June 1st

- Tuition due
- Physical exam & immunization records due

June 27th

First Day of Barn Day Camp Session 1

June 29th

First Day of Overnight Camp Full Summer/Session 1/Spark 1



July

July 1st

Barn Day Camp Session 1 Ends

July 4th

Barn Day Camp Session 2 Begins

July 9

Spark Session 1 Ends

July 15

Barn Day Camp Session 2 Ends

July 18

Barn Day Camp Session 3 Begins

July 22

Overnight Session 1 Ends

July 24

Overnight Session 2/Spark 2 Begins

July 29

Barn Day Camp Session 3 Ends

August

August 1

Barn Day Camp Session 4 Begins

August 3

Spark Session 2 Ends

August 12

Barn Day Camp Session 2 Ends

August 13

Fair

August 14

Overnight Full Summer/Session 2 Ends



• CONTACT US •

Who to Contact & When

All calls and emails should be directed to the Main Office year round during our office hours. Staff working in that office are dedicated to answering questions & assisting all camp families needs as well as directing all phone or email communications to ALL camps. We can answer your questions or connect you with right person or camp office who can.

During the summer months only (mid-June through mid-August), while camp is in session, please contact the Barn Day Camp Director if there are questions or concerns about your camper or about any logistics. The best time to call is 9:30AM – 11:30AM. at the **Barn office phone, (802) 422-3565**. This line also has voicemail where you can leave a message.

EMERGENCY COMMUNICATIONS ONLY

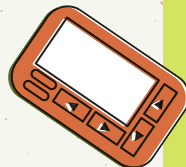
If you have a family emergency during your child's camp session, please call the Main Office during office hours FIRST. If it's outside of office hours or you cannot get a hold of staff at a camp office & MUST get a hold of someone within 24 hours, you may use our pager system.

To Use:

Call 1-888-622-3276

You will be asked who you would like to page.

Leave the **name of the camp director (Emily Mathon)** and a **brief message** and **phone number** where you can be reached.



Main Office Hours & Contacts

Summer Office Hours

Monday - Friday 8:30AM-4:30PM

Closed on Saturdays & Sundays

Year-Round

General

(802) 422 - 3761

info@farmandwilderness.org

Emily Mathon

Director of Barn Day Camp

(802) 422-3565 (summer only)

emily@farmandwilderness.org

Frances McLaughlin

Executive Director

(802) 490-5662

frances@farmandwilderness.org

Sam Green

Enrollment Director

(802) 422-3761

admissions@farmandwilderness.org

All Camp Health & Wellness

Terri Hunt | Health & Wellness Coordinator

headnurse@farmandwilderness.org



CAMP OFFICE CONTACT SHEET

Barn Day Camp (BDC)

Director | Emily Mathon

Director Email | Emily@farmandwilderness.org

Assistant Director Email |

BDCassistantdirector@farmandwilderness.org

Camp Office Phone | 802-275-4252

Flying Cloud (FC)

Director | Elliott Siegreest Jones

Director Email | Elliott@farmandwilderness.org

Assistant Director Email |

FCassistantdirector@farmandwilderness.org

Camp Office Phone | 802-238-6437 | leave a message only

Health Staff Contact* | 802-490-5711

*Same as Saltash Mountain

IB Camp (IB)

Co-Directors | Polly Williams & Clarissa Thompson

Co-Director Emails | polly@farmandwilderness.org

clarissa@farmandwilderness.org

Assistant Director Email |

IBassistantdirector@farmandwilderness.org

First Lodge Email |

ibfirstlodge@farmandwilderness.org

Big Lodge Email |

ibbiglodge@farmandwilderness.org

Senior Lodge Email |

ibseniorlodge@farmandwilderness.org

Camp Office Phone | 802-487-0399

Health Center Phone | 802-489-7888

Questers (Q)

Director | Paul Wachur

Director Email | paul@farmandwilderness.org

Camp Office Phone | 802-345-9690

Health Center Phone | 802-487-0435

**Flying Cloud and Red Spruce Grove do not have physical health center locations, but do have medical staff assigned to them who make regular trips to check in on these camp programs and can be reached by phone at the Saltash Mountain Health Center.*

Red Spruce Grove (RSG)

Program Director Email |

redsprucegrove@farmandwilderness.org

Camp Office Phone | 802-345-9712 | leave a message only

Health Staff Contact* | 802-490-5711

*Same as Saltash Mountain

Saltash Mountain (SAM)

Director | Sara Martin

Director Email | sara@farmandwilderness.org

Assistant Director Email |

samassistantdirector@farmandwilderness.org

Camp Office Phone | 802-490-5714

Health Center Phone | 802-490-5711

Tamarack Farm (TF)

Director of Tamarack Farm | Kate Kyros

Director Email | kate@farmandwilderness.org

Assistant Director Email |

tfassistantdirector@farmandwilderness.org

Camp Office Phone | 802-490-5703

Health Center Phone | 802-487-0435

Timberlake (TL)

Director | Jarod Wunneburger - aka "W"

Director Email | jarod@farmandwilderness.org

Assistant Director Email |

TLassistantdirector@farmandwilderness.org

First Lodge Email |

TLfirstlodge@farmandwilderness.org

Big Lodge Email |

TLbiglodge@farmandwilderness.org

Senior Lodge Email |

TLseniorlodge@farmandwilderness.org

Camp Office Phone | 802-490-1563

Health Center Phone | 802-557-0112

These offices and health centers are located physically at each camp and they will only be open between June 27th to August 14th.



HEALTH & WELLNESS AT CAMP •

COVID-19 Safety, Guidelines, Updates

We are diligent about creating a healthy camp environment every summer. This year, in light of the ongoing COVID-19 pandemic, we will have additional health & safety procedures in place. Not only are we a summer camp responsible for providing care and programming for hundreds of children over the summer, we are also the home and employer of hundreds of staff members. The health and well-being of our community is incredibly important to us and we take the responsibility of creating a safe environment very seriously. We learned a great deal from our experience last summer and we are working hard to make sure that we implement measures based on that experience and that we understand and follow the most up-to-date guidance for summer camps and implement changes and communicating this to our families and staff as we approach the summer.

Changes can still happen as we approach the summer. We ask that everyone participate in being aware of the Farm & Wilderness specific guidance, which we will communicate to all registered families as well as post on [our website's Health & Safety page](#). This will support a safe and healthy environment for us all.

Staff & Training

Farm & Wilderness takes many steps to ensure that all campers have a happy and healthy summer. Each summer, all cabin staff and trip leaders are trained in First Aid and CPR. We also have a number of staff who are certified as Wilderness First Responders and Emergency Medical Technicians.

Camp Health Centers

The Barn Day Camp is visited each day by one of the overnight camp Health Center Nurses and is on call as needed for emergent assessments. If a higher level of medical care is needed, local clinics and a regional hospital are within twenty miles of camp. If your Barn Day Camper needs an offsite medical consult, we will call you and ask you to pick your camper up and transport them to the clinic. We will use the phone number and /or email you have provided in CampDocs. Please let me/us know if you and your emergency contact are going to be unavailable or at a different location from the one listed for any period of time.

Medications & Prescriptions

It is Farm & Wilderness policy to collect all prescriptions/vitamins/medications of any kind from campers on the first day of camp (or the morning campers will leave for their overnight) and for the nurse/camp staff to dispense them as prescribed. **All medications must be in their original packaging/bottle with the prescribing directions printed clearly on the label.**

Camper Health Forms and Information

The Camper Health Form completed as part of registration as well as the Physical Exam Form are both required for a child to attend camp. It is important we have the most accurate health information for your child while they are in our care. More information on the Physical Exam Form can be found on page 8.

If there are any changes in your child's health before camp begins, please let us know before you arrive to drop them off.



HEALTH & WELLNESS AT CAMP

Daily Health Screening: All campers will have a daily health screening that will include a temperature check and questions related to COVID-19 signs, symptoms and exposure. You will be asked to bring your child home if they are showing symptoms of COVID-19, or have been exposed to someone with COVID-19, are awaiting COVID-19 testing results or have tested positive to COVID-19.

Illness: We ask that parents assist us by keeping sick children at home if they have experienced any of the following symptoms within the prior 24 hours:

- A fever over 100 degrees (37.8C) orally
- Signs of a newly developing cold or severe coughing
- Shortness of breath
- Chills, muscle pain or body aches
- Loss of taste or smell
- Diarrhea, vomiting, or upset stomach
- Unusual loss of appetite, fatigue, irritability, or headache
- Discharge or drainage from eyes, nose, or open sores
- Have been on close contact with someone with confirmed COVID-19 in the last 14 days
- Have consulted with their healthcare provider about current symptoms, COVID-19 testing was recommended and they are awaiting results.
- Have been tested for COVID-19 and return a positive diagnostic result.
- Please call the Barn Day Camp office to let us know if your child will not be coming to camp because of illness.



Emergencies

If your child is seriously injured or becomes seriously ill at camp, our staff will call 911. Immediately thereafter, you (or your emergency contact) will be notified. For less serious injuries/illnesses, our Wilderness First Aid certified staff will treat the injury/illness up to the level of their training. If a doctor's visit is the next step, you will be asked to pick up your child and transport them to the doctor or clinic of your choice. If your camper develops any signs and symptoms of communicable illness while at camp, we will notify you to come and pick up your camper





HEALTH FORMS & INFORMATION

Health History Form

What Are They & Who Completes Them?

The camper's parents/ legal guardians complete this form as part of registration. This is essential basic medical history, allergy, mental health, food preferences, and insurance information. These forms must be completed upon registration every year. If we do not have your camper's registration forms within 10 days of registering your camper, you will begin to receive automated reminder emails and you may get a call from us asking for you to complete the forms. Your registration may be cancelled if it remains incomplete after notifications.

The reason we ask for this information so early in the process is that every camper's profile undergoes a pre-camp screening by our staff. Camper families should expect to hear from one of our health staff before camp begins to check in about the information provided. Then, once summer starts, nurses have this information to provide your child with the care they need should they become sick or injured at camp. It also ensures we have information about food allergies for our kitchens.

How to Access & Update Them

You **MUST** complete the Health History form through your online account which holds your child's registration. If any changes happen between the time you first completed the form and the start of camp, please request an update to this form. If you need assistance in accessing your account, please contact our admissions department.

[ONLINE ACCOUNT LOGIN LINK](#)

Physical Exam Forms

What Are They & Who Completes Them?

These are essential forms containing information about your child's current health and immunization record completed by your child's primary care physician.

Most doctor's offices have their own format for these forms and we accept all formats as long as they contain basic health information, the immunizations record, and a physician's signature & contact information. We also provide our own form for you to bring to the doctor's office if you'd like. You can download a copy of this form via the physical exam form in your registration account or request a copy be mailed or emailed to you from Admissions.

You must submit a copy of this form before your arrival to camp.

Please do not email, mail, or fax your child's physical exam form. The form must be uploaded to their CampDoc account. If you have trouble uploading your form online, please contact us by email at admissions@farmandwilderness.org or call 802-422-3761 and someone will assist you.





Immunizations

To protect the health of all campers and staff, Farm & Wilderness asks ALL campers to be fully immunized before they arrive at camp, including requiring all participants (campers & staff) to have received COVID 19 vaccinations.

In the state of Vermont, summer camps are considered "Child Care" facilities. Therefore, we must follow the State health guidelines regarding immunizations for Child Care centers. For more information about child immunization requirements in the state of Vermont, visit the [Vermont Immunization Information for School - age Children website](#).

Immunization Exemptions & Waivers

The only possible exemptions from this policy are medical exemptions and will be reviewed on a case by case basis, with further information requests and/or conversations between our staff, your family and your doctor(s). Please contact admissions should you need this additional process started for your camper.

NEW THIS YEAR - Please enter your camper's immunization records (including dates each dose was administered) in the immunizations section of CampDoc. Next summer and thereafter, you'll be able to review and confirm this information, rather than input this information again.



COVID-19 Vaccinations for Campers

All participants must be fully vaccinated against COVID-19, with their final dose being received at least 2 weeks before their arrival at Farm & Wilderness. If a participant is eligible for a COVID-19 vaccine booster, they must also receive that dose before camp to maintain their fully vaccinated status.

In addition to listing vaccination records in CampDoc, you will also be asked to upload their COVID-19 vaccination record card.

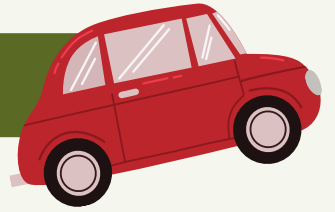
Off-Site Medical Care

Most care for minor injuries we can provide onsite. However, if your Barn Day Camper needs to be seen at an offsite clinic, you will be asked to transport your child to the clinic. If 911 or emergency services are called, your camper will be transported by that agency and you will be notified immediately.

Your insurance will be billed for any off-site medical care provided. Farm & Wilderness will provide invoices for any unpaid medical expenses or prescriptions accrued which you insurance does not cover.

We ask families to upload a legible picture/scan of their camper's insurance card to the insurance section of CampDoc, so we have this information readily available if needed.

• TRAVEL, ARRIVAL, & PICK-UP

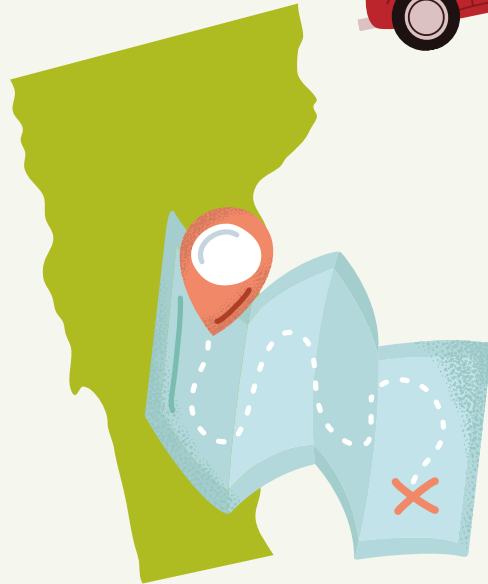


Traveling To & Within Vermont

There are many wonderful options and local accommodations if you are traveling to stay in the area during the time your child is enrolled at the Barn Day Camp.

Farm & Wilderness is located in Plymouth, Vermont near ski resorts and towns with a selection of hotels and rental houses available. We recommend that you visit the following sites to find the best accommodation for your visit.

[Suggested Area Lodging & Accommodations](#)



BDC Schedule

The BDC is in session Monday through Friday.
The schedule is as follows:

Session 1: June 27 - July 1 (one week)

Session 2: July 4 - July 15 (two weeks)

Session 3: July 18 - July 29 (two weeks)

Session 4: August 1 - August 12 (two weeks)

TRAVEL, ARRIVAL, & PICK-UP

Arrival: Drop-Off & Pick-Up

Our top priority is to keep our camp families safe and welcomed as they arrive to camp. We are very excited to greet you and your campers when you arrive this summer!

Arrival/Drop-off: Campers arrive at the Barn between 8:45 AM and 8:55 AM. Camp begins at 9:00 AM with the ringing of the bell. We will have updated pick up procedures for 2022. Those updates will be sent to parents/guardians when they are finalized. After you turn in on Farm & Wilderness Rd at the north end of Woodward Reservoir, drive across the dam and look for signs or a person directing you to where you can park your car.

Departure/Pick-up: Campers finish their day at 4:15 PM. We will have updated pick up procedures for 2022. Those updates will be sent to parents/guardians when they are finalized. We ask that you ALWAYS check in with a BDC staff person before picking up your child each day. Please pay close attention to the schedule of the last Friday of the session as it is different than all other camp days.

Pickup Authorization: If you plan on someone else picking up your child, either at camp or at the drop-off sites, the camp needs to know this in writing. For obvious safety reasons, no one can pick up your child without this written authorization from you.

Orientation and Information Sessions: There will be a family orientation and informational session the first Monday of each session for camper parents/guardians. Each orientation session offers parents/guardians an opportunity to ask questions and learn more about their camper's Barn Day Camp experience. **This may be a zoom call rather than in-person.** This will take place after drop-off that morning. Learn about all F&W camp programs, meet F&W staff, ask questions of the BDC director.



TRAVEL, ARRIVAL, & PICK-UP

Attendance and Closing Day

Attendance: If a camper does not show up on the first day of a session, the staff will call you to verify enrollment. We ask parents to notify the staff in advance whenever a child is going to be absent.

Last Day of Session 1: Pick-up will be the normal time between 4:00PM – 4:15PM. There will be bus service provided for this day.

First Day of Session 2: This year, Session 2 begins on Monday, July 4, and we will have a full regular day of camp, so please plan for your camper to be there!

Last Day & Closing Ceremony of Sessions 2, 3, & 4: On the final Friday of each two-week session (July 15th, July 29th, August 12th), camp will end earlier and families will receive their scheduled pick up time. We are optimistic about the possibility of returning to inviting families to join us for closing ceremonies and silent meeting (from 10-11:30am) on these Fridays and will let families know once we are certain if this will or will not be able to happen. Families are responsible for their child's transportation home on these last days. **There is no bus service on these Fridays.**

Prior permission is needed if we are to release a child to someone other than their parent or legal guardian. If you have arranged for someone else to pick up your child, you will need to give admissions and the camp director/camp senior staff advance notice of this arrangement along with the person's name and contact information before the camper will be allowed to leave with this person.





Driving Directions

From the Woodstock area and points East:

Take US Rt.4. West to Rt. 100 South in West Bridgewater. Go south on Rt. 100 for 2 miles to the main entrance of F&W and turn left on Farm & Wilderness Rd. Proceed on the camp road over the dam where there will be a person or sign indicating where to park.

From Rutland area and points West: Go East on Route 4 through Rutland and Killington, then take Rt. 100 south in West Bridgewater. Go 2 miles south to the main entrance of F&W and turn left at the sign on Farm & Wilderness Rd.

Proceed on the camp road over the dam where there will be a person or a sign indicating where to park.

From Ludlow area and points South: Take 100 north. Go north approximately 12 miles to Woodward Reservoir on your right. Turn right at the camp sign on Farm & Wilderness Rd. Proceed on the camp road over the dam where there will be a person or a sign indicating where to park.

Woodstock Shuttle

For summer 2022 we will offer shuttle transportation for campers to and from camp from the Woodstock (VT) elementary school. This service is an additional \$80 per week, per camper, (\$160 for the two week sessions (2, 3, 4). To sign up for transportation, please add this option on during registration or please email admissions@farmandwilderness.org to add it on later!

The shuttle departs Woodstock at 8:15am and returns at 4:55pm. If you are going to be late to drop off or pick up or not use/miss the shuttle, please call the Barn Day Camp office. We cannot guarantee holding the shuttle past its departure time for folks who are running late. If the bus is more than 10-15 minutes late, please call the Barn Day Camp office. If there are any last minute changes to the transportation schedule, you will be notified via phone.

All campers will be expected to arrive and depart on the shuttle for every day of the session, unless prior arrangements are made with the Barn Day Camp Director or Assistant Director. This includes the first day of a session. If you plan to drive your camper in yourself on the first day, please contact the Barn Day Camp ahead of time to let us know, otherwise we will assume your camper plans to ride the shuttle.

There is no shuttle service on the second Thursday of a 2 week session, as that is when campers depart for their overnight. There is also no shuttle to camp on the second Friday morning for campers who do not spend the night, and there is no shuttle back to Woodstock on closing Fridays of a two week session.

The shuttle runs to and from Woodstock every day of Session 1.



COMMUNITY & CULTURE

Mission & Values



Our mission:

Joyful Play. Purposeful Work. Rugged Outdoor Living.

Our camps and conservation efforts teach timeless skills and kindle the spirit within.

Our Values:

We honor our Quaker roots and are guided by Quaker values and practices:

Simplicity

We believe in the radical notion of unplugged resourcefulness and restful stillness

We minimize that which separates us from one another and the natural world

Living simply prepares each of us to find ourselves

Peace

We cultivate peace: first within ourselves, then the world

We are called to speak our truths compassionately

It's not easy, and it's worth the struggle

Integrity

We strive to embody our beliefs in our actions

We are mindful of our intentions and are each responsible for our impact

Keeping our word and keeping it real

Community

We gather in joyous service to each other and the land

We honor traditions that guide us and they must not bind us

Inclusivity facilitates belonging

Equity

We take our place alongside others working towards a more just world

We confront societal forces that divide, degrade, and dehumanize

The work is never done; we lift as we rise

Sustainability

We are not separate from the land, the water, and the life all around us

We work with humility for the well-being of our planet, now and for future generations

Living in nature sparks curiosity and wonder, and that's what we're here for.

Many Quaker & Quaker-based organizations have a similar acronym of shared principles, known as the "SPICES", and just like we have done here, take the opportunity to further define what exactly each of the named values means for them.



COMMUNITY & CULTURE

Unplugged

We aim to live a simple life here at Farm & Wilderness. Campers reside in simple wooden or canvas structures without electricity and use composting outhouses. Shower houses are located nearby. We don't allow personal electronic devices, televisions, screens of any kind, or recorded music in cabin areas or program areas at any of our camps. Some of our camps such as Flying Cloud and Red Spruce Grove, don't permit electricity of any kind, such as battery operated lights.

While our camp program areas and spaces where camper live and play are free of screens, our camp offices, medical centers, and Main Office are equipped with the tools to run camp such as electricity, phones, & internet. We also permit our photographers to capture camp memories with the appropriate cameras and equipment.

The “Fifth Freedom”

America's “four freedoms” were first articulated by President Franklin D. Roosevelt in a State of the Union address as freedom of speech and expression, freedom of religion, freedom from want, and freedom from fear. Here at Farm & Wilderness, we have traditionally recognized an additional “fifth freedom,” which, simply put, is the freedom to be oneself.

We encourage campers to find their truest and most genuine potential through simple living and activities filled with physical and mental challenges. We invoke “fifth freedom” to help us focus on healthy personal choices and on expressing our individuality. Campers particularly love the freedom to dress as they wish, without fear of being reprimanded by their peers.



Building A Welcoming Community

Your child will live closely with children and staff of different backgrounds, cultures, races, and religions. We teach respect for differences and expect campers to interact at all times in ways that are respectful and inclusive. Prejudice, discrimination, and oppression on the basis of class, race, gender, and sexual orientation are discussed in a variety of forums during a camper's time at Farm & Wilderness.

We strongly believe that building a welcoming and inclusive community requires campers and staff to engage in shared discussion, reflection, and experience around equity, diversity, inclusion, & belonging while living, playing, and working together in the wilderness and on the farm. We use our mission and values to support this community growth throughout the summer.

Although the daily schedule at the camps remains similar from year to year, the character of each summer is created by individual campers. Community builds steadily over the course of the session as campers work together, cope with interpersonal conflicts, play together, and sit in silence together each day.

• COMMUNITY & CULTURE



Special Events

We are optimistic about the possibility of larger in-person gatherings at Farm & Wilderness this summer, most of all our end of year Fair. While there are likely to be some changes from years past, the overall spirit of gathering together to celebrate a wonderful summer will remain at the heart of the day.

We look forward to resuming scheduled tours of our camps for interested families and will update this portion of our website once we have these planned!



Life on the Farm

For the majority of campers, living at camp also means living on a working farm. Animals giving birth and animals dying are part of the natural cycle of farm life and these events also occur during the summer. It is important to us that campers understand where their food comes from and the full cycle of how the food we eat at camp starts and ends its journey to our plates. Campers are encouraged to take part in working with animals to the degree that they feel comfortable.

Adventure Day

This event occurs during the first Thursday of every session. Each group goes on a day hike/adventure appropriate for their age level. These daylong excursions will highlight some of the beautiful and interesting parts of Farm & Wilderness campus as well as to local places of interest. We will be hiking and camping close to camp and emphasizing adventure in being out and working together rather than where or how far we go. Some of the locations may require a short ride in a vehicle. Essential Items to Pack: Your child will need a daypack to carry their lunch, bathing suit, rain gear, warm clothing layer, and water bottle. Each child is expected to carry their own pack. A plastic bag inside helps to keep things dry if it rains.

All Adventure Day trips leave at 9:20AM and return by 4:00 PM.



Wilderness Trips (Session 2, 3, & 4 only)

An important part of your child's experience at camp is the overnight camping trip. This will happen on the second Thursday of each session. Hawks/Ravens groups have a different Overnight Trip (See Hawks/Ravens Overnight Trips details). There will be no overnight trips during Session 1. Groups hike, cook dinner together, and sleepout overnight. Participation is not required, unless the camper is registered for the Hawks/Ravens program. The camp-out experience will be age-tailored, with the youngest campers staying closest to the Barn Day Camp.

All groups will depart by noon on the second Thursday of sessions 2, 3, & 4:

Session 2: July 14th

Session 3: July 28th

Session 4: August 11th



All Groups will return to camp on Friday morning between 9:00AM –9:30AM before the closing ceremony of camp.

Optional Pick-Up

While we encourage all campers to attend the overnight trip, for those campers who do not wish to sleep overnight, we urge them to stay at least through dinner. If they are not camping out, they should be picked up between 7:00PM and 8:00 PM at a prearranged location, most likely the Barn, but if their group is travelling farther, we may arrange for you to meet elsewhere. Pick-up must be coordinated with counselors and the Barn Day Camp Director/Assistant Director.

Hawks/Ravens Overnight Trips

Campers in the Hawks and Ravens program, an option at registration for 9 & 10-year-olds, are required to participate in a mandatory two night overnight trip. Hawks/Ravens overnight begin on the second Wednesday of the session. There is no special registration for the Hawks/Ravens group during Session 1.

All Hawks/Ravens groups will depart by noon on the second Wednesday of the session.

Session 2: July 13th

Session 3: July 27th

Session 4: August 10th



All Hawks/Raven Groups will return to camp on Friday morning between 9:00AM –9:30AM before the closing ceremony of camp.

All Overnight Trips

By enrolling your child at the Barn and sending them with overnight gear, we assume permission has been given for the overnight unless you tell us otherwise, as we will not be asking for a separate signed permission form. All overnight trip destinations are subject to change due to a variety of factors, such as weather and van availability. Families and children should be prepared for this possibility. Families will be notified if campers will be traveling in vans.

What to Pack

Use the Barn Day Camp [Packing List on our website](#) as your guide. The goal of the overnight experience is to foster self-sufficiency and independence. Thus, we expect all campers to carry their own clothes, water bottles, and mess kits.



Firm Rules

Swimming Policy

All campers are required to take swim tests during their first few days at camp and learn about water safety in and around our lakes. Personal flotation devices (PFDs) and other swim aids are always available. Barn Day Camp provides swim lessons throughout the summer, and campers are grouped according to their swimming skills. Swimmers at the waterfronts are supervised by lifeguards and swim instructors trained and certified under the auspices of a nationally recognized water safety provider. All campers and staff must follow camp waterfront rules throughout the summer.

COVID –19 protocols

For the safety and health of our camp communities, campers will be asked to follow all COVID-19 related safety procedures throughout the summer. Our wonderful staff will offer continued instruction and communication so that campers understand and can follow our procedures.

Grounds for Removal

At Farm & Wilderness, alcohol, tobacco, illegal drugs, and violence have no place. We want our policy to be very clear: Campers who use or have in their possession any alcohol, tobacco, or illegal drugs will be asked to leave camp immediately with no tuition refund.

Participation in physical violence, bullying, or leaving Farm & Wilderness property unaccompanied by a staff member is also grounds for immediate removal with no tuition refund.



• TUITION DEADLINES & POLICIES •

2022 Tuition Rates

Session 1| June 27 - July 1 | **\$590**
Session 2| July 4 - July 15 | **\$1,800**
Session 3| July 18 - July 29 | **\$1,800**
Session 4| Aug 1 - Aug 12 | **\$1,800**

All camp tuition is DUE on June 1st in 2022.

Deposits & Tuition Payments

- Before June 1, a \$100 non-refundable deposit is required upon registration.
- After June 1, full tuition is required upon registration.
- Deposits are non-refundable, unless you are a campership applicant.
- Unpaid balances for any and all family members must be reconciled in order for a camper to be registered.
- It is not possible to make any tuition reduction for arriving late or leaving early.
- Payment is in U.S. currency, payable by check, e-check, credit card, or wire transfer.

Cancellations & Refunds:

- Registration cancellations made before March 1st are eligible for a tuition refund less the \$100 non-refundable deposit.
- Families are responsible for the full amount of tuition if a cancellation is made after March 1st, except in cases of severe illness or family emergency.
- Campership families are notified within one month of their application due date and then have two weeks from that award notification to accept the award or withdraw their registration and receive a refund of their deposit.
- There will be no refund if a camper is asked to leave during the session for an infraction of a camp rule, for disruptive behavior, or if a camper is voluntarily withdrawn.

Financial Aid, Fees, Partnerships

The ability to apply for camperships is open for all of our overnight camps. To learn more and how to apply, please visit our [Financial Aid for Campers page](#) for more information, application deadlines, or contact Admissions directly with any questions.

Additional Expenses & Fees

Additional expenses and fees, if incurred, will be reflected on invoice, along with tuition. They include the following:

Shipping Charges

If there are any lost & found items that are shipped back to you after camp is over the UPS, USPS, or Fed-Ex fees will be added to your bill.

Medical Expenses

Medical bills incurred over the summer will be sent from off-site facilities to your insurance provider. If necessary, F&W will pay for prescriptions up front, and then bill families.

Partnership Families

We partner with several other organizations to bring campers to Vermont in the summer. If your camper is attending Farm & Wilderness through one of our partner organizations such as [1199 Anne Shore Sleep-Away Camp Program](#), [Saint Regis Akwesasne Mohawk Tribe](#), [Vermont Migrant Education Program](#), the tuition amounts and policies are different than listed on this page. Please contact your organization's representative or our admissions department to understand what is required for your child to be registered for the summer. You will also receive direct communication from Farm & Wilderness about your child's registration before the summer.

AFTER CAMP

Camper Letters

After your camper has returned home, you will receive a letter from your camper's counselor that reflects highlights of the camper's adventures and accomplishments over the summer. The letter describes some of your child's activities and shares aspects of their living and growing experiences in the community.

Surveys

Throughout the year, Farm & Wilderness emails surveys to all families. The information we collect from these is an important part of our assessment of the summer. Your assistance is very much appreciated.

Mail, Lost & Found, & Shipping Items Home

Any mail that arrives for your child after they have left camp will be forwarded to you or returned to sender.

Farm & Wilderness claims no financial responsibility for personal items lost, stolen, or damaged during your child's stay at camp. For this reason, we discourage camper families from sending any items to camp they wouldn't be willing to risk losing. We will ship any found valuable & clearly labeled items home if possible. We will bill you for the shipping costs. any lost and found not labeled or claimed within one-week of the last day of camp will be donated.



Keeping in Touch

[The Interim](#) is our newsletter for camper parents and friends of Farm & Wilderness. You'll automatically be on our email list for the electronic version of the Interim. If you would like to receive the paper version, please let us know and we will add you to our address list.

Medical Bills

Medical bills incurred over the summer will be sent from off-site facilities to your insurance provider. If necessary, Farm & Wilderness will pay for prescriptions up front, and then bill families.



Photos from Camp

Farm & Wilderness is an unplugged, technology-free environment for campers. When it comes to photos, we prioritize our camper's experience over taking pictures. We understand many families want to see photos of their children at camp, but because of the sizes and locations of our camps and the scope of our programming we are unable to photograph every camper.

With your child's enrollment, you are granting Farm & Wilderness permission to use images, pictures, slides, film, and video of your child taken by Farm & Wilderness for press, promotion, marketing, social media, and advertising of Farm & Wilderness as well as any of our affiliated organizations such as the [American Camp Association](#) and the [Ninevah Foundation](#).

Summer 2023

WE WILL OPEN NEXT
SUMMER'S REGISTRATION BY
NOVEMBER 1ST.

PLEASE USE THE SAME
ONLINE REGISTRATION
ACCOUNT TO REGISTER YOUR
CHILD FOR NEXT SUMMER!



FARM & WILDERNESS